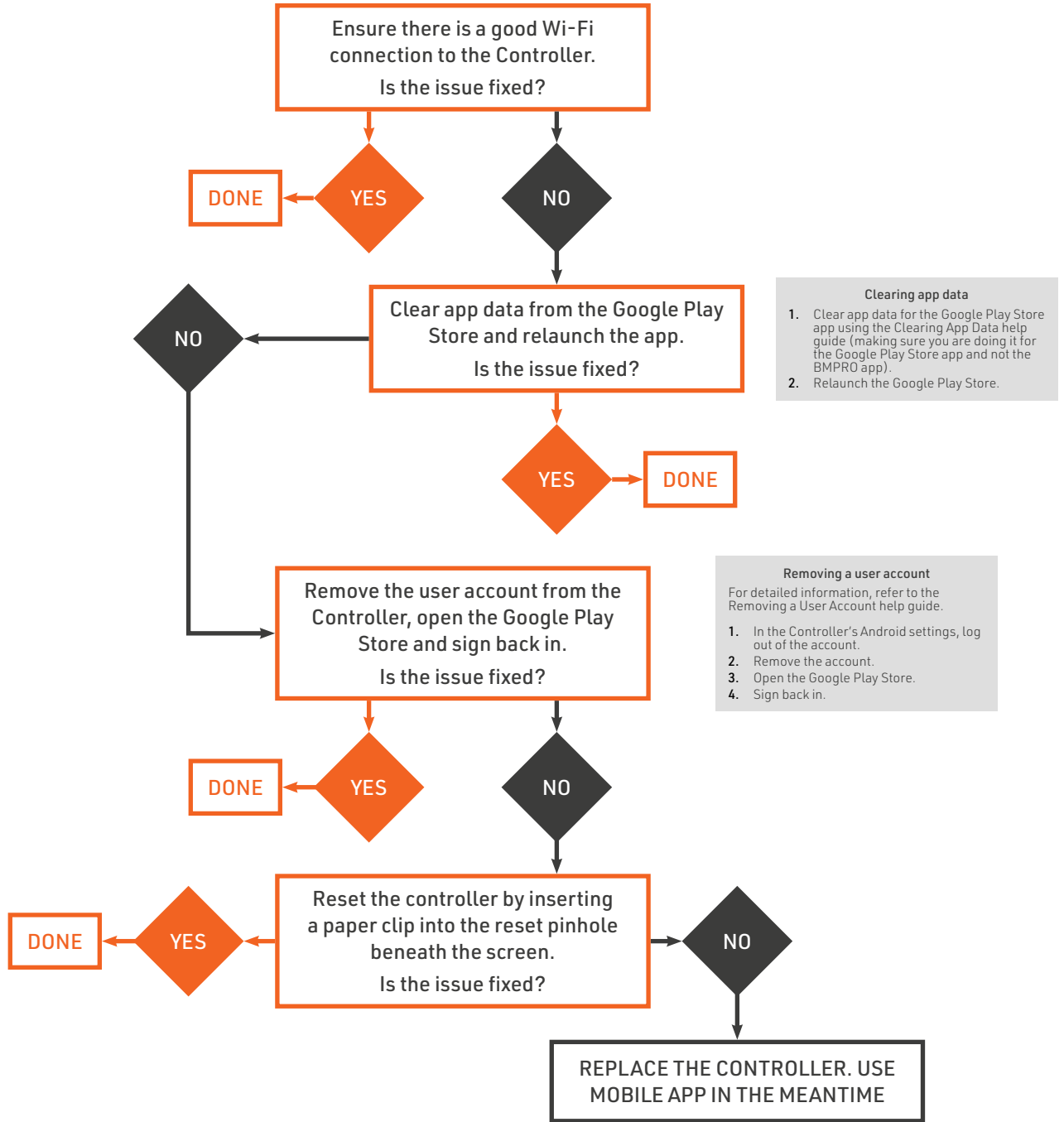


RESOLVING GOOGLE PLAY STORE ISSUES



Additional Resources

JAYCOMMAND Help Guide: Clearing App Data
 JAYCOMMAND Help Guide: Removing a User Account
 RVMaster Help Guide: Clearing App Data
 RVMaster Help Guide: Removing a User Account
 BMAPRO Connect Help Guide: Clearing App Data
 BMAPRO Connect Help Guide: Removing a User Account
 Article: Resetting a Controller

If you are an RV technician, once the update is complete, remove the generic user account from the Controller.

Removing a user account

For detailed information, refer to the Removing a User Account help guide.

1. In the Controller's Android settings, log out of the account.
2. Remove the account.
3. Open the Google Play Store.
4. Sign back in.