

JAYCOMMAND

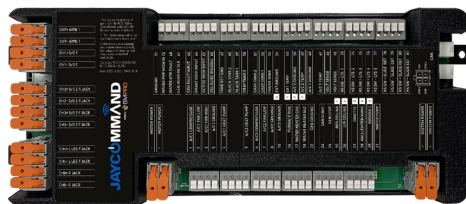
powered by  **BM PRO**

HELP GUIDE

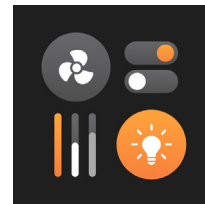
CONFIGURING YOUR RV FROM YOUR OWN DEVICE

JAYCOMMAND

powered by  **BM PRO**



NODE




APP

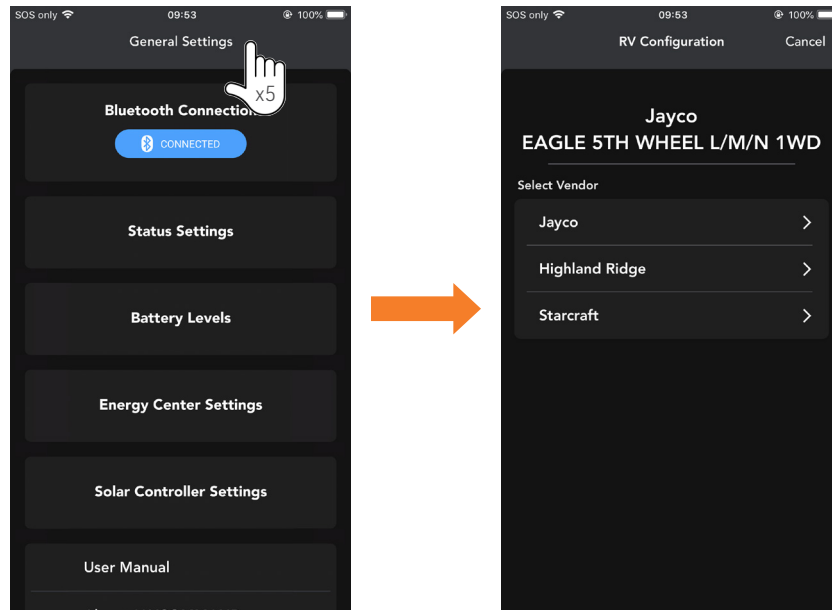
SYSTEM COMPONENTS

This guide outlines the configuration instructions for the JAYCOMMAND App to match your Jayco RV model.

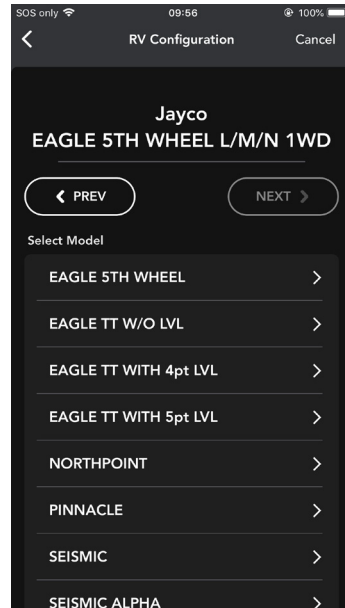
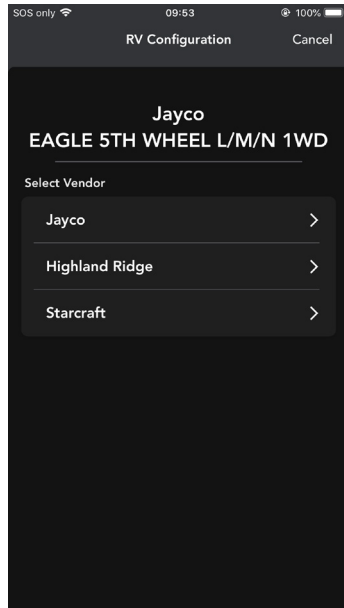
1. Identify the model of your RV.



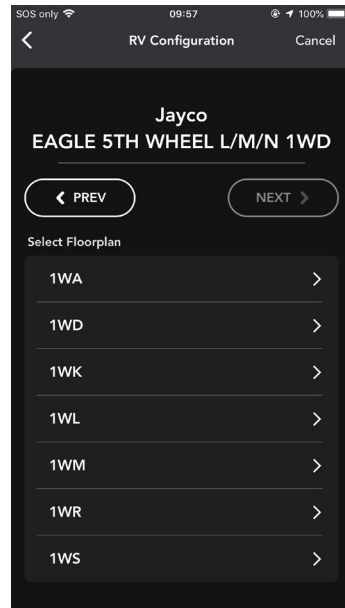
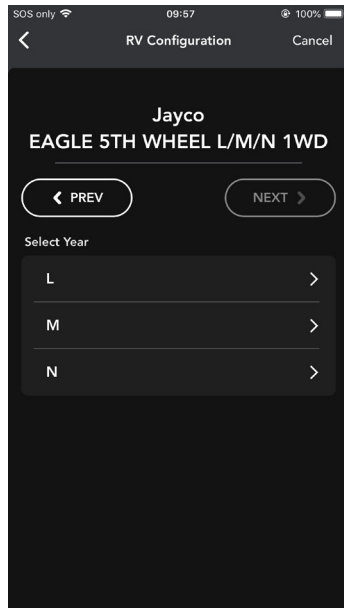
2. In the JAYCOMMAND app, press the Settings button  to go to the **Settings** page.
3. Press the General Settings bar five times to go to the **RV Configuration** page.



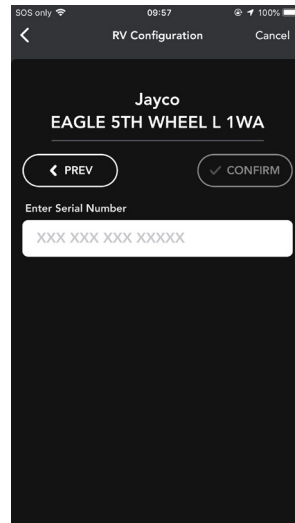
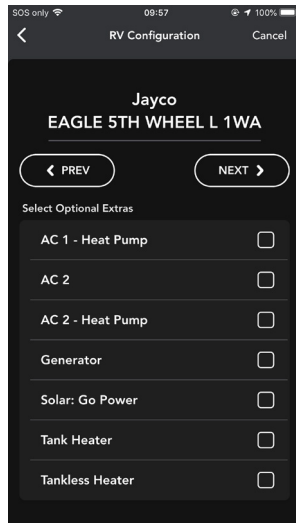
4. From the RV Configuration page, select your vendor.
5. Select the model of your RV.
6. Press **Next**.



7. Select the year of your RV.
8. Press **Next**.
9. Select the floorplan of your RV.
10. Press **Next**.



11. Select any optional features of your RV.
12. Press **Next**.
13. Type your Jayco RV's serial number.
14. Press **Confirm**.



The JAYCOMMAND App will restart and the new configuration will be displayed.



BPRO
service@teambpro.com
Unit 1, 821 E Windsor Ave, Elkhart IN 46514 USA
teambpro.com

DOC PART 036156
REV 1.0